

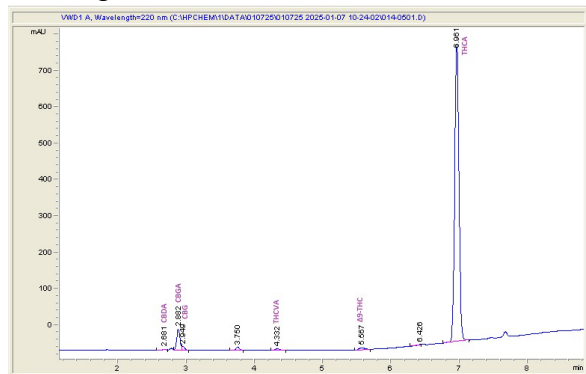
Cereal Milk

Sample Submitted: 01-06-2025; Report Date: 01-09-2025

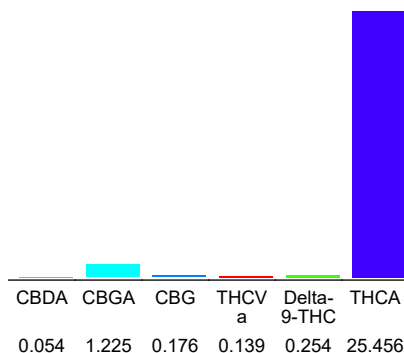
Cereal Milk

Plant Material: Hemp Flower

Chromatogram



Cannabinoid Profile



Cannabinoid Profile by HPLC

0.25%

Delta-9-THC

0.00%

CBD

27.30%

Total Cannabinoids

Cannabinoid	% wt	mg/g
CBDA	0.054	0.54
CBGA	1.225	12.25
CBG	0.176	1.76
THCVa	0.139	1.39
Delta-9-THC	0.254	2.54
THCA	25.46	254.56
Total Cannabinoids	27.30	273.0
Calculated Total THC	22.58	225.79
Calculated CBD Yield	0.05	0.47

Calculated Total THC = Delta-9-THC + 0.877 * THCA

Calculated Maximum CBD Yield = CBD + 0.877 * CBDA

Marin Analytics, LLC

250 Bel Marin Keys Blvd, Suite D4
Novato, CA 94949

833-321-TEST / info@marinanalytics.com

Mike Clemmons
Lab Manager

This sample has been tested by Marin Analytics, LLC using valid testing methodologies and a quality system. Values reported relate only to the sample tested. Marin Analytics, LLC makes no claims as to the efficacy, safety, or other risks associated with any detected or non-detected levels of any compounds reported herein. This Certificate shall not be reproduced except in full without the written approval of Marin Analytics, LLC. Copyright 2023 Marin Analytics, LLC All Rights Reserved.