

Sample London Pound Cake

Strain

0.20%	5.44%	36.20%
$\Delta 9$ THC	Total CBD	Total Cannabinoids
Not tested	Pass	362.0
Water Activity	Moisture	mg / g Total Cannabinoids

Harvest/Prod Date

Report Created

3/14/2024

Results Valid Until

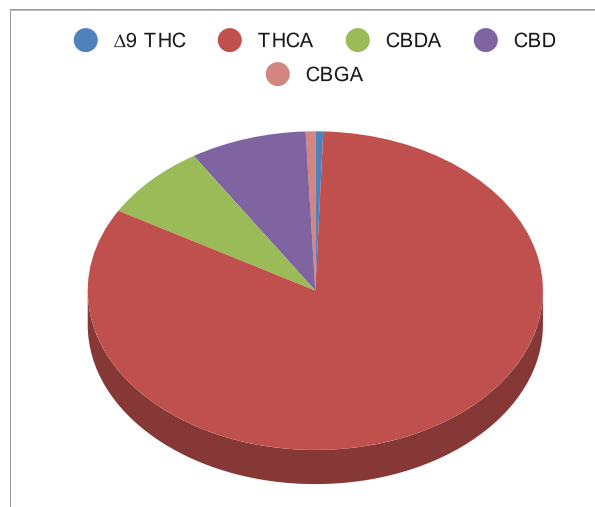
3/15/2025

Sample Extracted
3/13/2024 11:37:00

Sample Analyzed
3/13/2024 13:12

Method SOP LO001-R11


Cannabinoids	%Weight	mg/ gram	LOQ(% /w)
$\Delta 9$ THC	0.20	2.0	0.06
THCA	29.97	299.7	0.06
Total THC (THCA*0.877)+9THC	26.49	264.9	0.06
CBDA	2.78	27.8	0.06
CBD	3.00	30.0	0.06
CBN	<LOQ	<LOQ)	0.06
$\Delta 8$ THC	<LOQ	<LOQ)	0.06
CBC	<LOQ	<LOQ)	0.06
CBGA	0.25	2.5	0.06
CBG	<LOQ	<LOQ)	0.06
CBDV	<LOQ	<LOQ)	0.06
CBDVA	<LOQ	<LOQ)	0.06
THCVA	<LOQ	<LOQ)	0.06
CBDQ	<LOQ	<LOQ)	0.06
HHC	<LOQ	<LOQ)	0.09



Total THC and Total CBD are calculated values per OAR 333-064-0100. Cannabinoid values for plant matter samples are reported on a dry weight basis. Water activity action level is 0.65Aw. LOQ= Limit of Quantitation. NR=Not Reported.

[Rogue Research Lab LLC](https://rogue-research-lab.com)
[Rogue River, OR 97537](https://rogue-research-lab.com) Tel. 541-582-1962

rogue-research-lab.com


 Craig Berry - Lab Director
 3/14/24


ROGUE RESEARCH LAB

Results pertain to submitted samples only. Rogue Research Lab LLC makes no claims as to the consumer safety or other risks associated with any detected or non-detected amounts of any pesticides, solvents or other adulterants. This report shall not be reproduced, unless in its entirety, without written approval from Rogue Research Lab LLC. Samples were received in good condition and all QC samples met acceptance criteria of the method; data available upon request. For informational purposes only.